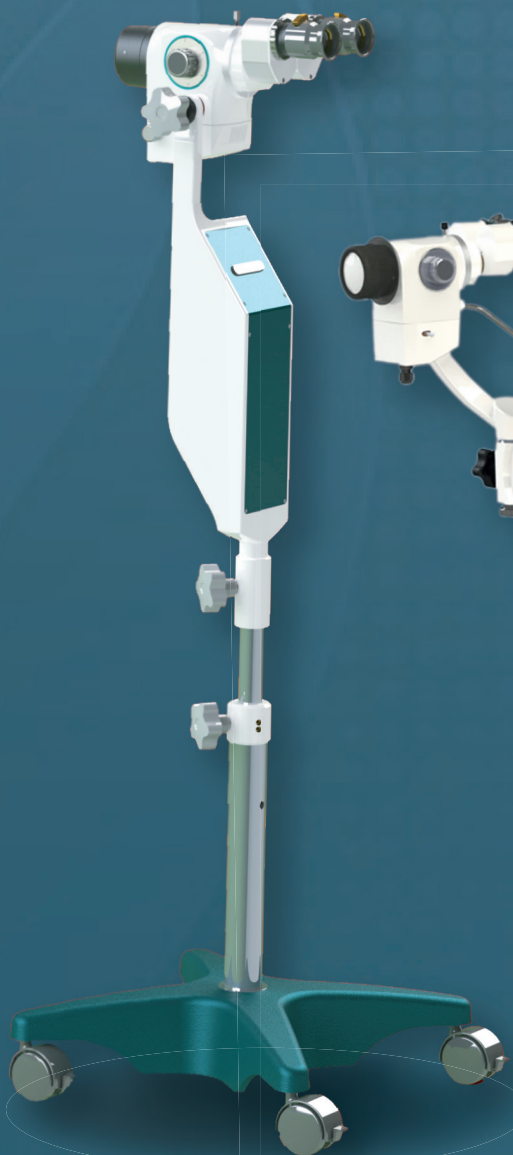


# COLPOSCOPES

CP DECIUS 2500 & CP DECIUS 1250 · DFVasconcellos

Colposcopes CP DECIUS 2500 and CP DECIUS 1250 serve the specialty of Gynecology. Quality linked to the best cost-benefit on the market.



DFVASCONCELLOS

# COLPOSCOPE

## CP DECIUS 2500

### ENTRY EQUIPAMENT

- ✔ Possibility to use it in any size of office.
- ✔ Best value for money on the market.



### LED ILLUMINATION SYSTEM

High-intensity LED illumination system generates superior contrast in identifying abnormal tissues and devices, allowing professional procedures to be performed safely and accurately.

- ✔ LED (up to 50.000 hours of use)
- ✔ Zero cost with fiber optic changes
- ✔ Low power consumption
- ✔ Illumination intensity adjustment
- ✔ Filters: Cobalt Blue and Green



### TECHNICAL SPECIFICATIONS

- ✔ Straight Binoculars | 12,5x eyepieces
- ✔ Interpupillary distance: 55mm to 77mm
- ✔ 300mm working distance
- ✔ Manual microfocusing on objective
- ✔ 5 steps Magnifications: 3x, 4x, 7x, 11x, 17x
- ✔ Observation field:  
78mm, 50mm, 32mm, 19mm, 13mm

## ACCESSORIES

### FOR GREATER CLARITY IN YOUR CONSULTATIONS AND RESULTS

The capture and transmission of high resolution images and videos from the **DECIUS** colposcope are essential for a better understanding and acceptance of the patient regarding their exams and treatments, in addition to creating a personal collection so that the professional can catalog their procedures and results.

The **DFVasconcellos** video system allows professionals to rely on Full HD quality, viewing and transmitting the images from their colposcope in a practical and innovative way.

### SLR CAMERA SYSTEM

- Compatibility with the main SLR cameras on the market, Canon and Nikon.
- Translates high-precision optical processes into high-resolution, high-quality images.

### USB CAMERAS

- USB offers much greater convenience to the professional, as it allows a connection to any computer with USB 2.0.
- Procedure images can be transferred simultaneously.

### VIDEO AND PHOTO ADAPTERS

- Compatibility with the main cameras on the market.
- The camera accurately affixed to your colposcope.
- Adapters: Mc-A52 | Mc-A406

One output



Beam splitter 50/50

2 outputs



SLR camera adapter

Remote control



\*HD camera adapter

\*Picture of DFV camera FULL HD

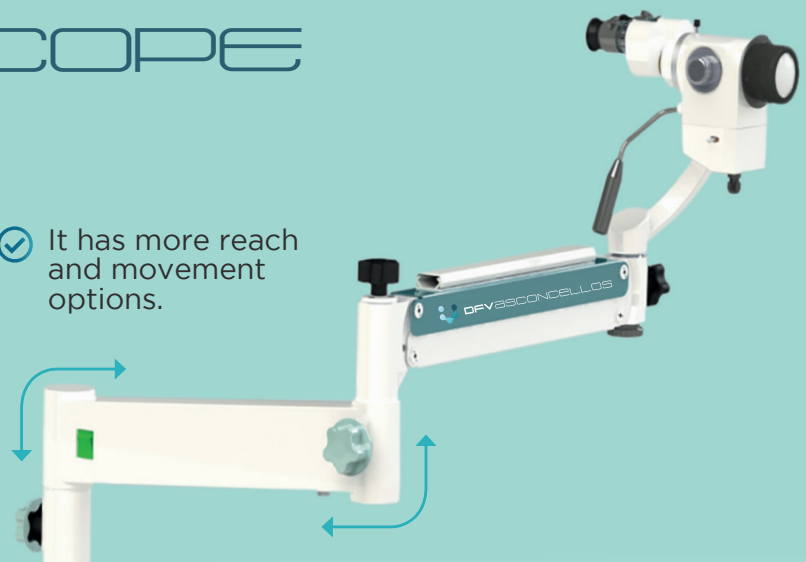
# COLPSCOPE

## CP DECIUS 1250

### WITH PANTOGRAPHIC ARM

- ✔ Modern structure with smooth ergonomics, reducing tension and fatigue during the procedures.
- ✔ Rotation lock of optical head: enables better observation and more comfort for the professional.

- ✔ It has more reach and movement options.



## ERGONOMIC PERFORMANCE

The modern design of DFV colposcopes allows adjustment of height, focus and angles towards the patient, providing an ergonomic and more comfortable positioning, reducing day-to-day fatigue.

Fully Ergonomic, possibilities:

- ✔ It can be adapted to the gynecological table. Model (CP 2512).



## MORE PRECISE RESULTS

The DFV range of colposcopes allows for inclusion of image capture accessories, in addition, we have the exclusive software DFCap, which allows the generation of reports and patient records.

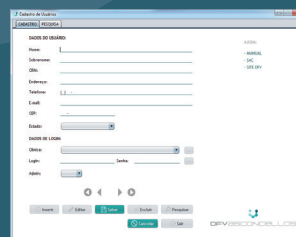
- ✔ Compatible with major cameras in the market, Canon, Sony, Nikon, Analog and USB.
- ✔ Software for service optimization and allows video recording.

# MEDICAL REPORT SYSTEM

## CREATED BY DFV, DFCAP SOFTWARE

The DFCap capture system is a feature used by doctors to perform the examination of colposcopy. Therefore, the objective of this software is to optimize the service and allow the capture of images and videos during the exam.

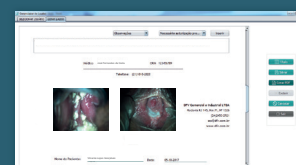
The software was developed in partnership with gynecologists and allows doctors to keep patient data, viewing and editing images and the issuance of reports. Generating convenience and optimizing query time.



Patient record



Clinics record



Report management

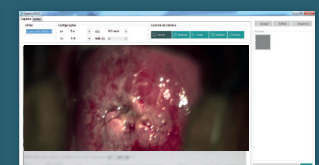


Image capture

Software features:



Complete registration of patient and clinic



Report management



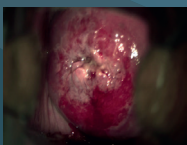
Patient histories and pathologies



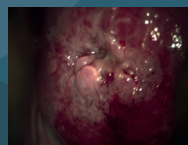
Image capture

# PROCEDURES

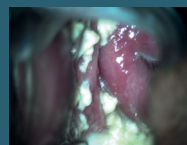
\*Images courtesy by Dr. Flávia Menezes



Cervical cancer



Cervical cancer



Vulvovaginal candidiasis



Condyloma vulvar in introitus



## TECHNICAL SPECIFICATION

		CP - 2500	CP - 1250	CP - 2512
<b>OPTICAL HEAD</b>	<b>INCREASE SELECTION</b>	MAGNIFICATION CHANGER		
	<b>OBJECTIVE LENS</b>	300mm		
	<b>EYEPIECES</b>	12,5X		
	<b>BINOCULAR</b>	STRAIGHT		
	<b>TOTAL INCREASE</b>	3X, 4X, 7X, 11X, 17X		
	<b>OBSERVATION FIELD</b>	78mm, 50mm, 32mm, 19mm, 13mm		
	<b>IPD (INTERPUPILAR DISTANCE)</b>	55 a 77mm		
	<b>FOCUSING</b>	MANUAL		
<b>ILUMINATION SYSTEM</b>	<b>LIGHT SOURCE</b>	LED		
	<b>ILUMINATION FIELD</b>	89MM		
	<b>DIMMER</b>	ADJUSTMENT IN THE KNOB ON THE OPTICAL HEAD (POTENTIOMETER)		
	<b>FILTERS</b>	GREEN/BLUE COBALT		
<b>BASE MOUNT</b>	<b>BASE</b>	WHEEL BASE		
	<b>MAXIMUM ARM EXTENSION</b>	-	1100mm	560mm
	<b>BASE SIZE</b>	400mm	430mm	
	<b>VERTICAL ARM COURSE</b>	150mm	550mm	
<b>ACESSORIES</b>	<b>BINOCULAR</b>	45° OR 60°		
	<b>BEAM SPLITTER</b>	MC-A389 - BEAM SPLITTER - ONE OUTPUT		
	<b>CAMERA ADAPTER</b>	MC-A52 OR MC-A406		
	<b>EYEPIECE</b>	10X		

**DFV COMERCIAL E INDUSTRIAL LTDA**  
 comercial@dfv.com.br - <https://dfv.com.br>  
**Comercial:** +55 21 98283-3611  
**Sales:** +55 11 98439-2343  
**Technical support:** +55 11 98439-2243  
 Rodovia RJ 145, Km 71, S/N. - Valença  
 Rio de Janeiro - CEP 27600-000 - Brasil

